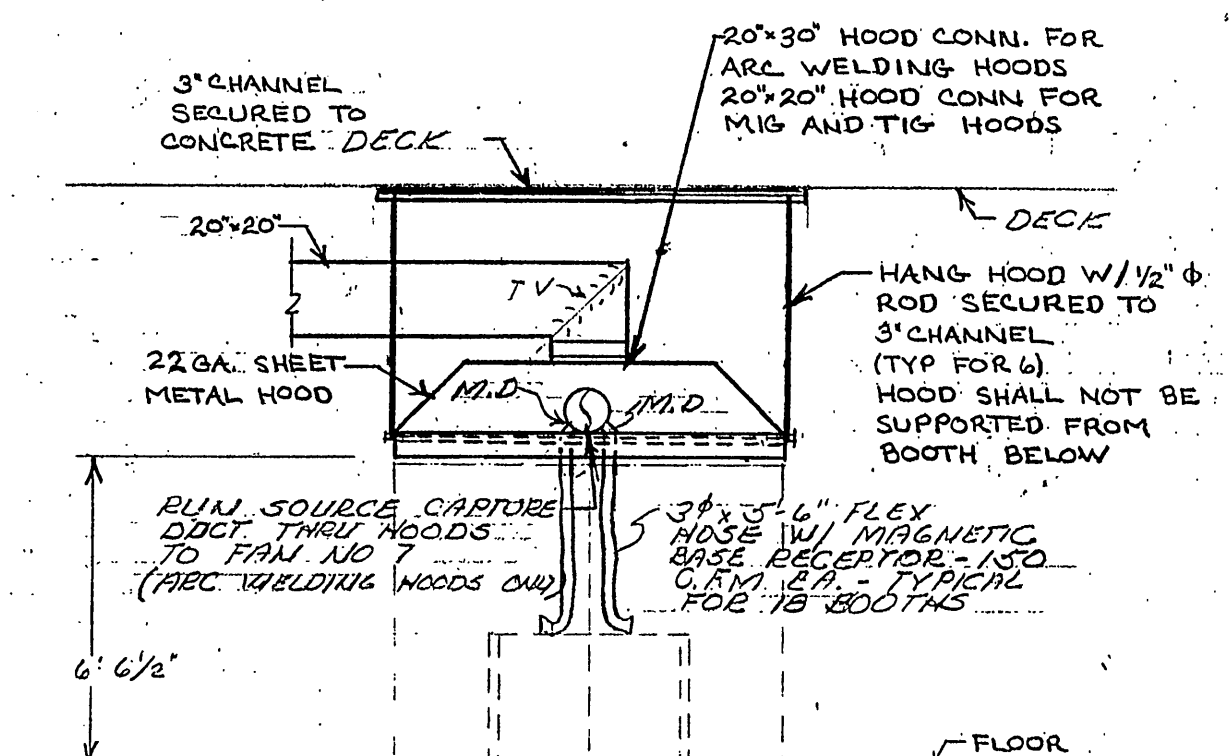
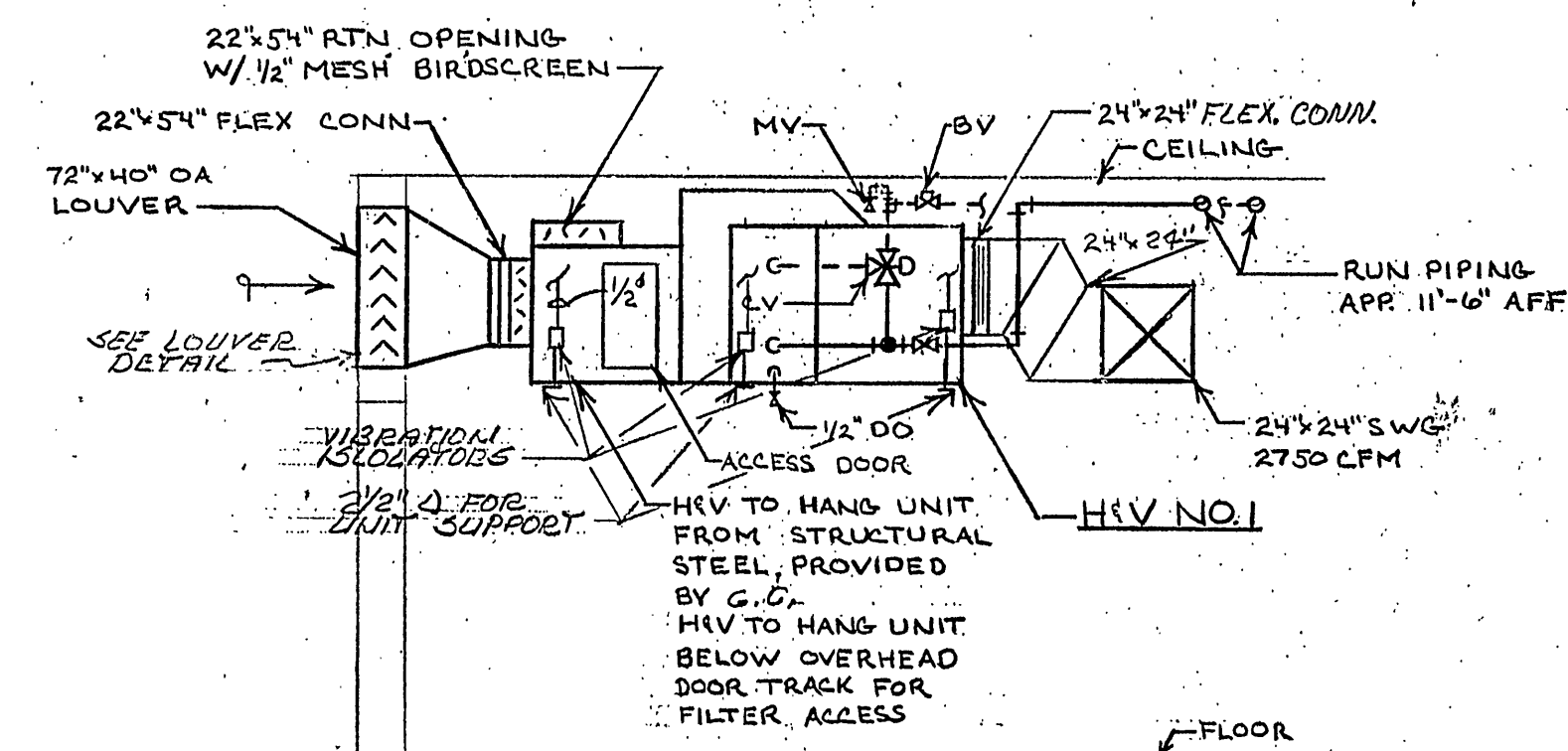
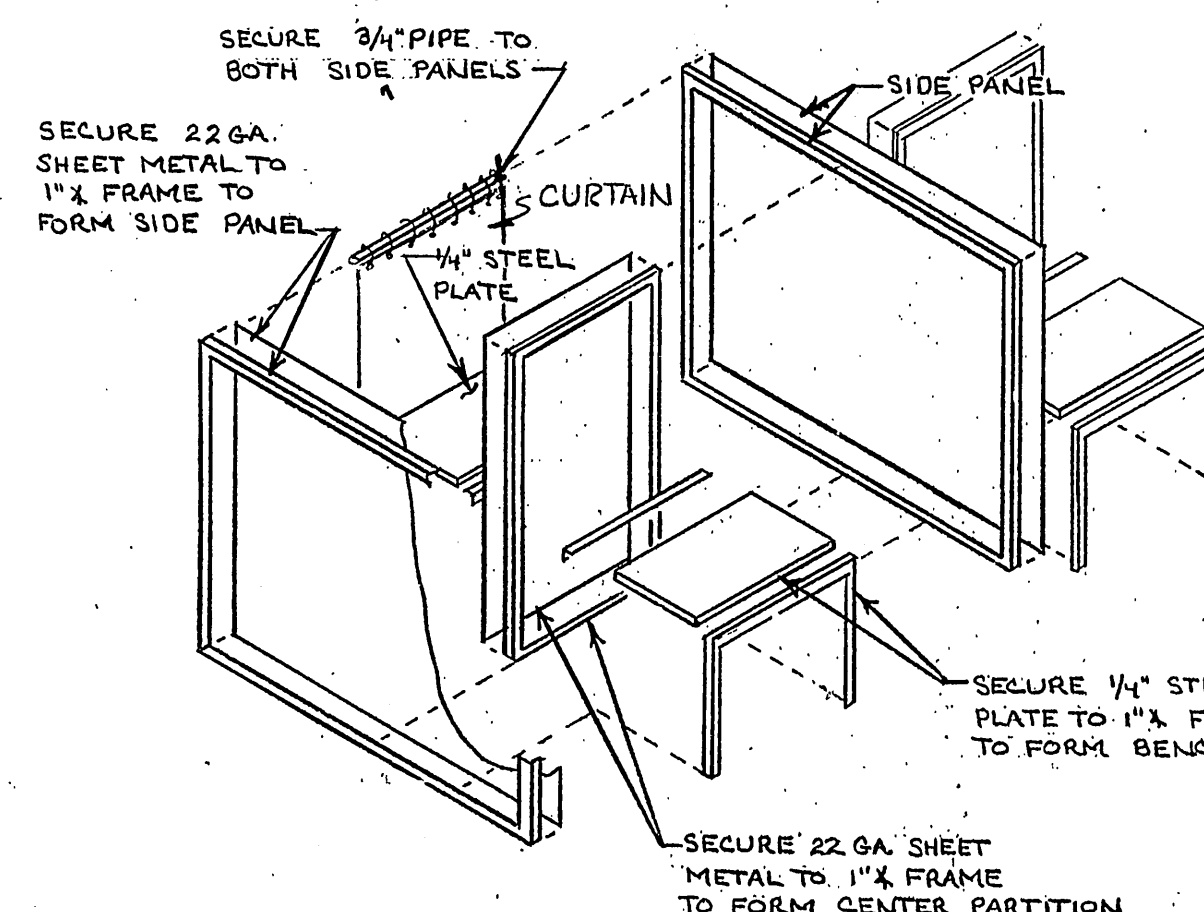


WE SHALL INCLUDE THE FOLLOWING:

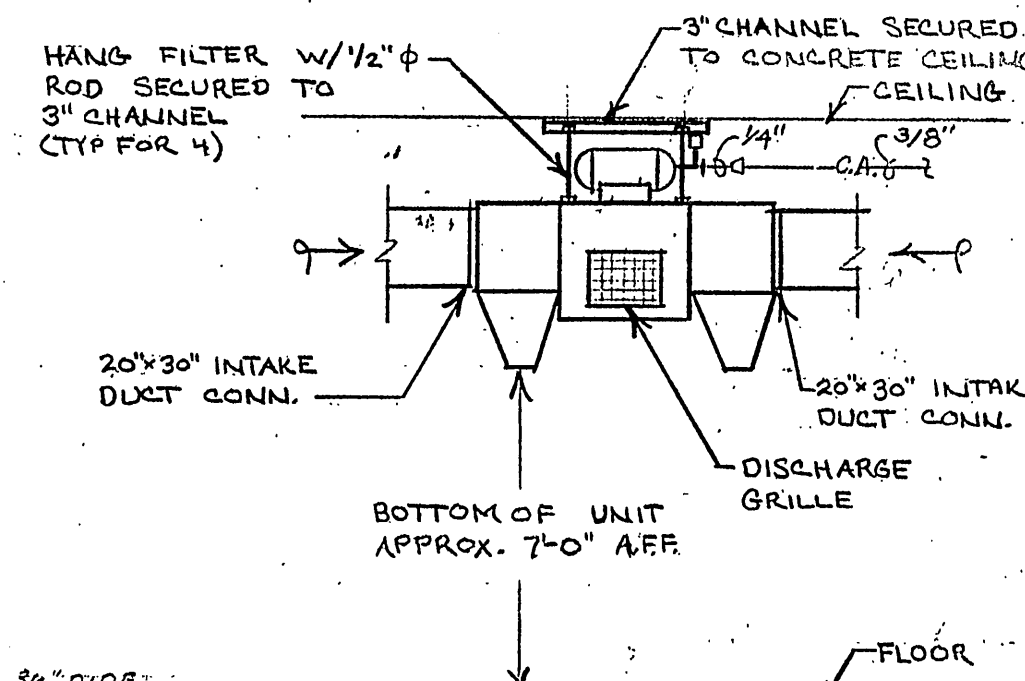
1. FILTER/NOL THRU NO.5 AND ASSOCIATED DUCTS TO THE HOODS
2. COMPRESSED AIR PIPING IN WELDING LAB.
3. THREE INCH WELDING HOODS, MIG HOOD, C HOOD & GAS WELDING HOOD
4. FLEX. DUCTS & MAGNETIC BASE RECEPTORS
5. ARC WELDING BOOTHS, MIG BOOTHS, GTIG BOOTHS
6. EXHAUST FAN NO.7 & ASSO. DUCTS
7. EXHAUST FAN NO.24 & ASSO. DUCTS
8. EXHAUST FAN NO.25 & ASSO. DUCTS
9. OXY-ACET MANIFOLD PIPING



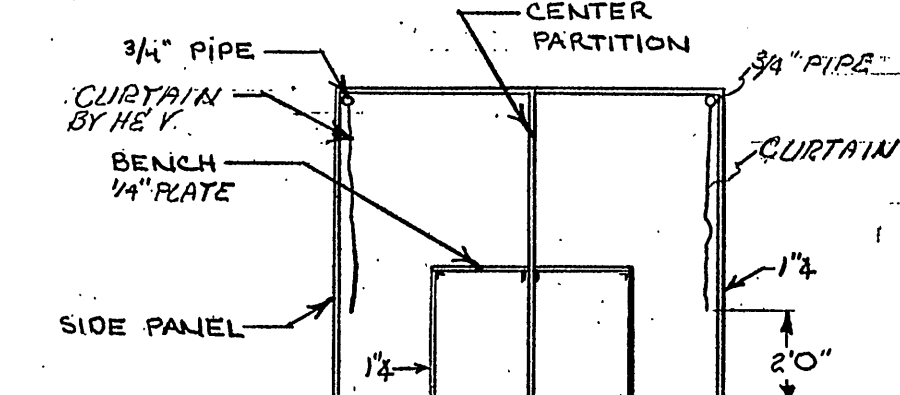
① DETAIL - H&V NO. 1  
SCALE - 1/4" = 1'-0"



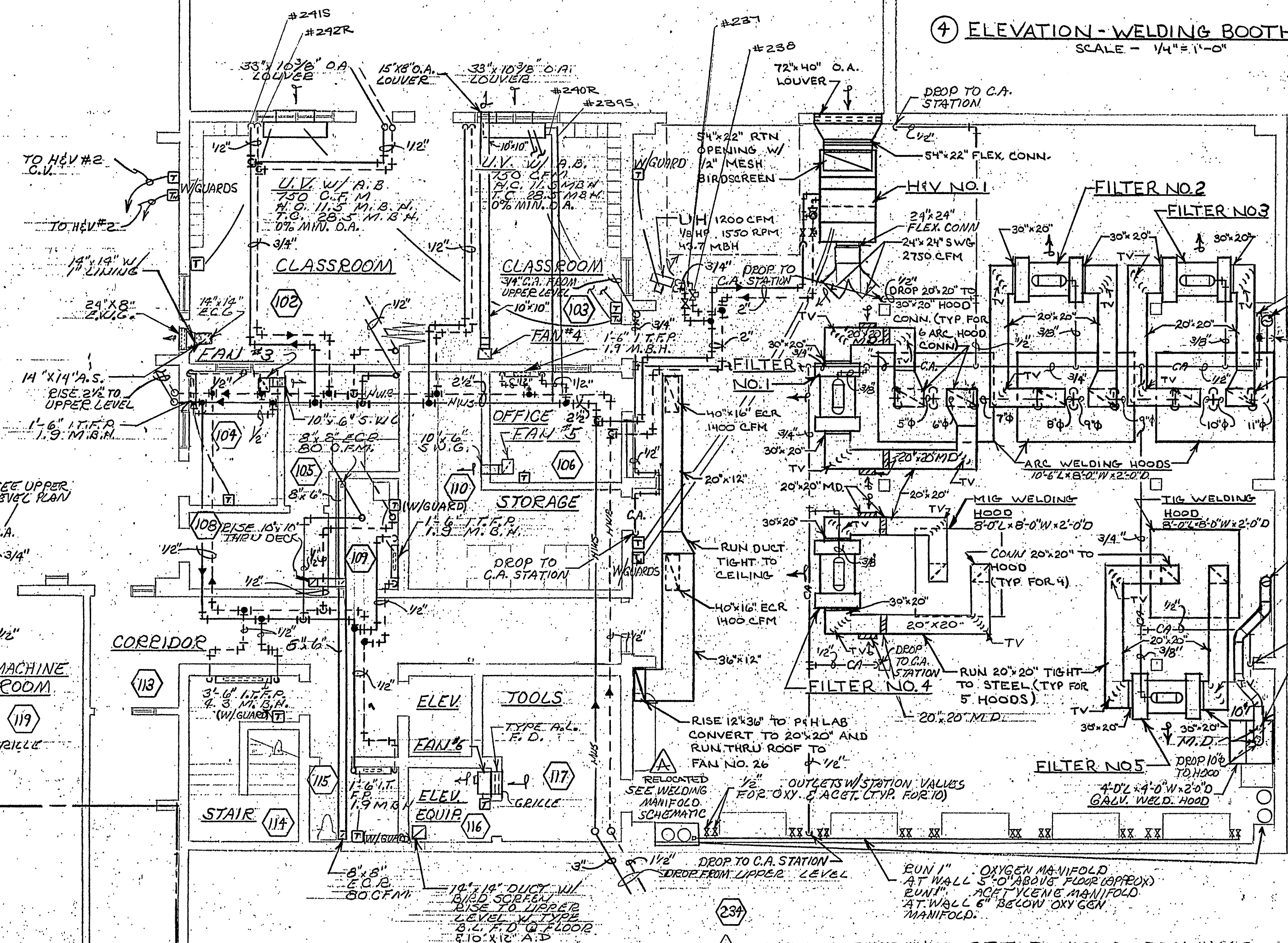
② DETAIL - WELDING HOOD RM 107  
SCALE: 1/4" = 1'-0"



⑤ DETAIL - FILTER HANGING  
SCALE -  $\frac{1}{4}" = 1'-0"$



③ DETAIL - WELDING BOOTH FABRICATION  
NO SCALE



3/4" SECURED TO CEILING

10" HOOD CONNECTION

2x2" SQUARE CAPTURE DUCT THRU HOOD & CONNECT TO 1/2" FLEX. DUCT

10"

1/4" FLEX. DUCT

1/2" RISE 1/2" DUCT & CONNECT TO 10" DUCT

HANG HOOD N/O 1/2" END SECURED TO 3" CHANNEL

2x2" SHEET METAL DUCTS

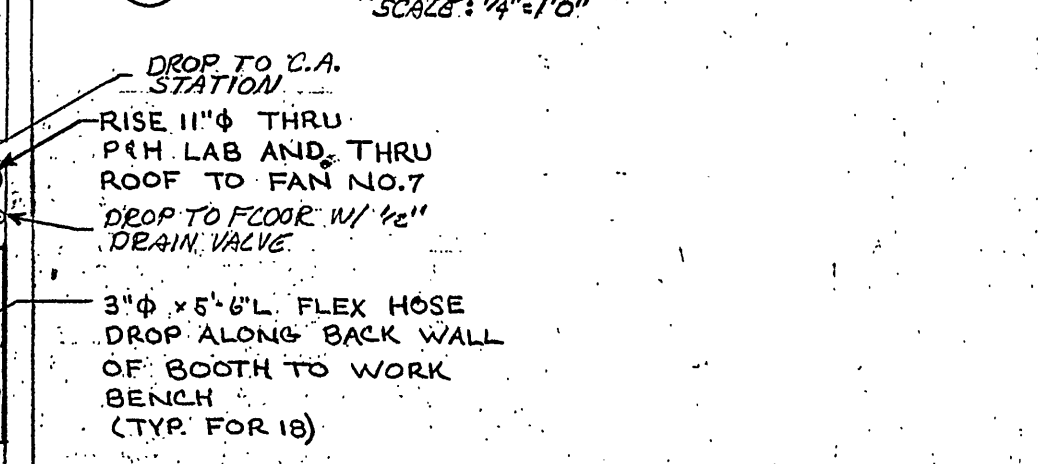
1/2" FRAME ALL AROUND

MAGNETIC BASE RECEPTOR

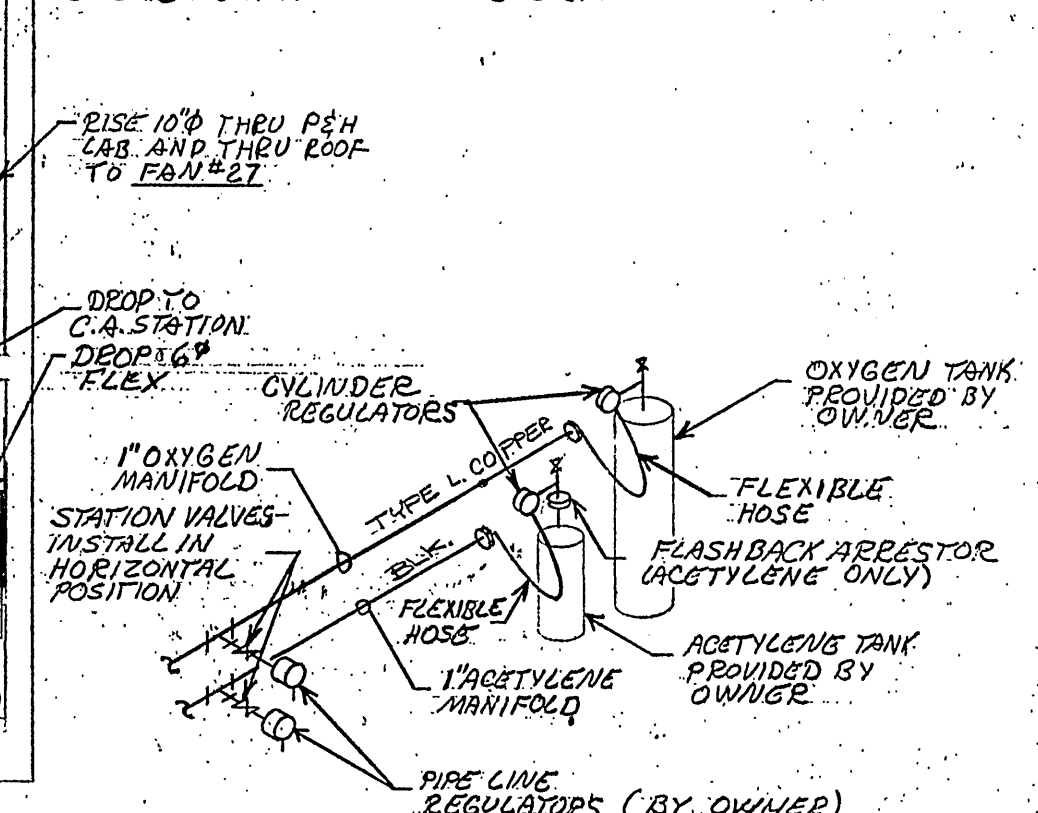
CEILING

BOTTOM OF HOOD 6" ABOVE FLOOR

(6) GALVANIZED WELDING HOOD



ADD ALT. BID. NO. 9.  
SEE DESCRIPTION THIS DRAWING



⑦ WELDING MANIFOLD  
SCHEMATIC  
NO. SCALE

△ WELDING SHOP H&V SEE REVISED DRAWINGS

NORTH LOWER LEVEL PLAN  
SCALE: 1/8"=1'-0"